



**Florida Department of Health in Clay County
Annual Report
2017—2018**

**Governor: Rick Scott
State Surgeon General: Celeste Phillip, MD**



The Florida Department of Health in Clay County is a state agency in partnership with county government. This Annual Report summarizes accomplishments and activities of DOH-Clay for the period of July 1, 2017—June 30, 2018.

Prepared by Florida Department of Health in Clay County

Published: September 2018

Message from Heather Huffman, MS, RDN, LD/N, IBCLC
County Health Department Administrator



Dear Clay County Community,

It is my great pleasure to share with you the 2017-2018 Annual Report. This Annual Report outlines our mission, vision, and values and highlights the services to our community during the 2017-2018 fiscal year. The Florida Department of Health in Clay County (DOH-Clay) provides a range of services to the residents of our community including health education, school health services, WIC and Healthy Start services, and clinical based services to name a few. All of our residents enjoy the benefits of our essential services, including immunizations, emergency preparedness, environmental health services, and disease prevention and control. We continue to work collaboratively with our community partners throughout the county to look for ways to improve health through the most efficient and effective manner.

Here is a list of a few of our accomplishments this past year:

- Activation of the Special Needs Shelter and management of the ESF8 desk in response to Hurricane Irma. This was our longest and largest special needs sheltering event in history.
- Completed the 2nd of our 3 year Community Health Improvement Plan (CHIP) with a number of successes.
- Transitioned WIC Program Services from the Fleming Island location back to Green Cove Springs location. This reduced the overhead of having an annual leased space and has allowed us to utilize those funds to provide additional services. We also opened a satellite office for WIC services at the Bear Run Clinic.
- Collaboration with Clay Behavioral Health Services to initiate a suicide prevention program at our Teen Clinic weekly.
- Established a new Disease Intervention Specialist position to assist in reducing the rising incidences of STDs in our county.
- Participated in a number of community events including Touch a Truck, Kids Fest, and Health Fair at Fleming Island High School.
- Completed the PACE- EH assessment which utilizing the protocol for assessing community excellence in environmental health.

This annual report provides information about all of programs and services throughout this past year. For more information on current programs and services available, please visit our website <http://clay.floridahealth.gov>. I would like to extend our sincere appreciation to our community partners, particularly those that work with us on our Community Health Improvement Plan and the Infant Mortality Taskforce to improve the public health of our community and to the Board of County Commissioners for the continued financial support. And lastly, to the staff of the Florida Department of Health in Clay County, for their continued dedication and tireless effort to serve our community.

As we move onward into our next fiscal year, I am confident we will continue to strive to improve health in all places including where we live, work, learn, and play. These environments have a tremendous impact on our health and by re-shaping people's economic, physical, social, and service environments, we can help ensure opportunities for health and support healthy behaviors. This will be accomplished by the public health department working with those who are best positioned to create policies and practices that promote healthy communities and environments. This is "Health in All Places".

A handwritten signature in black ink that reads "Huffman". The signature is cursive and fluid.

Table of Contents

Governance	5
Mission, Vision & Values	
Teams & Committees	
Strategic Plan	
Accreditation	
Administrative Department	6
Fiscal & Budget	
Vital Statistics	
Information Technology	
Facilities	
Clinical Services Department	8
Clinical Services Programs	
Disease Control & Prevention	
School Health Program	
Community Health Department	16
Community Health Initiative	
Healthy Start Program	
WIC Services	
Emergency Preparedness	
Environmental Health Department	26
Partnerships & Outreach	
Community Participation	
Community Health Improvement Plan	28
Locations & Contact Information	29

Governance

Mission:

To protect, promote, and improve the health of all people in Florida through integrated state, county and community efforts.

Vision:

To be the Healthiest State in the Nation.

ICARE Values

Innovation,
Collaboration,
Accountability,
Responsiveness,
Excellence

Accreditation

The Florida Department of Health Integrated Public Health Department System became accredited by the Public Health Accreditation Board (PHAB) in March 2016. Accreditation provides a framework for a health department to identify performance improvement opportunities, to advance management and develop leadership, and improve external relationships.

FDOH - Clay utilizes a governance system to provide strategic direction, make recommendations and provide employees an opportunity to share in decisions made for the organization. The system consists of the following:

Teams and Committees

- Senior Management Team
- Performance Management Council
- Employee Satisfaction Committee
- Customer Satisfaction Committee
- Safety Committee

Strategic Plan

The Florida Department of Health in Clay County 2016-2018 Strategic Plan aligns with the FDOH strategic plan, while addressing issues unique to Clay County, such as those identified in the Community Health Assessment, Community Health Improvement Plan, and Healthiest Weight Initiatives. The four strategic areas DOH-Clay is focusing on are Health Protection & Promotion, Financial & Business Excellence, Service to Customers & Community, and Workforce Development. These strategic issues were developed by DOH-Clay's Performance Management Council combining and integrating a collection of data, subject matter expert opinions, and perceptions. As of the end of 2017-2018 fiscal year, the strategic plan was at 83% completion.



Administrative Services



Vitals

Vital statistics is comprised of official records for birth, death, fetal death, marriage, and dissolution of marriage. The collection of these records are crucial for our county and other agencies to review our public health data and vital events.

You may need certified copies of the records for passports, school entrance, employment, proof of citizenship, governmental benefits or insurance. A copy of these records can be ordered through the local County Health Department. We have also interfaced with *VitalChek.Com* to accept credit card orders for birth and death certificates and offer overnight delivery. Counties have computer access from 1917 to present for birth records for the entire state.

Applications	Number of Services	Fees Collected
Birth Certificates	3,229	\$187,996.00
Death Certificates	3,869	
Birth Certificates via Tax Collector's Office	875	\$11,414.00

Facilities

Facilities is responsible for upkeep of each building in Green Cove Springs and Bear Run Clinic, in addition to, monitoring our fleet of county vehicles. The facilities team have made and continue to make terrific improvements to our buildings and safety concerns.



- ◆ 01/18 Reconstructed Building B to move WIC in over from Fleming Island location.
- ◆ 01/18 Beautification to Building A and B with new flooring and carpeting
- ◆ New AEDs and Stop the Bleed Kits installed in Building B (WIC), Building A (Admin)
- ◆ 06/18 Ordered two new Dodge Journeys to replace two aging vehicles in fleet

Fiscal & Budget

This Division's purpose is to provide quality supportive services to our Divisions, Programs, and Staff to achieve excellence. Responsibilities of this Division include fiscal and budget, human resources, facilities maintenance, and information technology.

In our effort to be more efficient and accountable we have instituted several new business practices:

- ◆ The eVoucher system upgrade, which replaced our smart server, is a paperless vouchering system designed to provide enhanced features and functions to its customers. This allows us to be eco-friendlier and significantly cuts down on the use and cost of paper associated with the smart server system.
- ◆ Purchasing by department has been implemented and is working quite well. This implantation allows each department to process their own departmental purchases. We support the purchasing function for each of these departments to include, Epidemiology, Vital Statistics, Environmental Health, School Health, Facilities and Maintenance, Healthy Start, WIC as well as the clinic. We work collaboratively to ensure all aspects of purchasing are completed accurately, timely and cost effectively.
- ◆ Program Managers continue to monitor and make revisions to budgets on a quarterly basis.



Information Technology

The Information Technology department is responsible for providing technical support for DOH-Clay, DOH-Baker, and MQA Investigative Services Unit (Jacksonville) locations. The IT department also assists DOH-Nassau as needed. Support includes server, desktop, network, data backup, phone system, and commonly used software. The department is also tasked with ensuring compliance with data security standards and updating the internet and intranet web sites.

- ◆ Completion of **1,570** customer service tickets.
- ◆ Installation of new desktops and laptops.
- ◆ Completion of requirements for leased telephone system to reduce total cost of ownership.

Implemented touch screen based customer satisfaction surveys, resulting in higher survey participation rate, immediate notification of responses, and streamlined resolution of issues.



Clinical Services



The goal of the School Health Services Program (SHSP) is to ensure that students are healthy, in school, and ready to learn. DOH-Clay provides basic health school services to all public-school children along with partnering with 30 private schools to ensure entry requirements are being met, as well as assisting with mandatory health screenings.

Core Services of SHSP include:

- ◆ Nursing assessments
- ◆ Health Counseling
- ◆ Referrals and follow-up for suspected or confirmed health problems
- ◆ Individualized health care plan development
- ◆ In-school care management for chronic and acute health conditions
- ◆ Vision, hearing, scoliosis, and growth and development screenings
- ◆ Preventative dental screenings and services
- ◆ First aid and emergency health services
- ◆ Communicable disease prevention and intervention

Services Provided in School Health Rooms in 2017-2018	# of Services
Registered Nurse Assessment & Counseling	140,305
Licensed Practical Nurse Evaluation & Treatment	74,804
Paraprofessional Evaluation and Treatment	31,351
Staff and Parent Consultations	81,623
Individualized Health Care Plans Developed	1,949
Complex Medical Procedures Performed	35,069
First Aid Administration	91,801
Medication Administration	79,047
ESE Staffing / Screening	2,741
Immunization Follow-Up Services	1,901
Student Health Record Reviews	25,353

~ Services are provided in accordance with the local School Health Services Plan which is jointly developed, biennially, by the Florida Department of Health (DOH) in Clay County, Clay County School District (CCSD), and the School Health Wellness Advisory Council (SHWAC).



Health Screening Results 2017-2018

Health screenings provide opportunities for the RN to assess student health related issues in the school setting. Vision, hearing, scoliosis and growth and development screenings are conducted in accordance with Florida Statutes 381.0056.

Vision and hearing impairment directly interfere with the learning process and are often detected during school screenings. A plan for follow-up is an essential component of the screening program. In Clay County, three attempts for follow-up are conducted, as needed, to notify the parent of any suspected abnormalities.

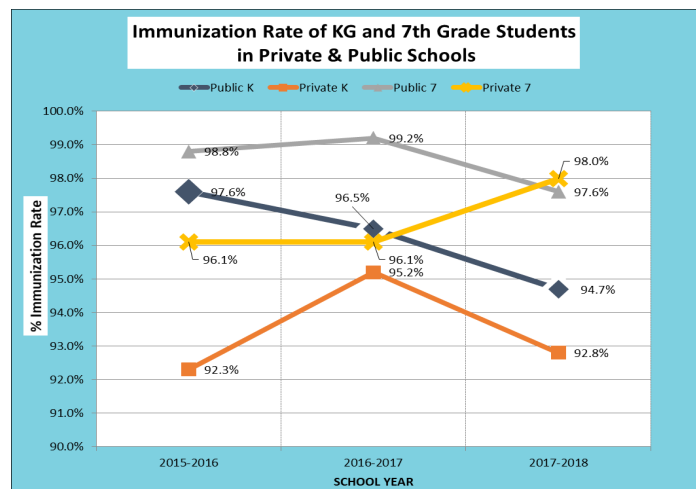
Grade	Vision	Hear- ing	Scolio- sis	Growth and Development
K	2,435	2,411	-	-
1 st Grade	2,453	2,459	-	2,377
3 rd Grade	2,595	-	-	2,423
6 th Grade	2,919	2,856	2,831	2,663

Immunization Compliance in Clay County Schools

The School Health Team is implementing action steps, so all Clay County Schools will achieve or exceed the 95 percent state goal of KG and 7th grade students receiving all required immunizations upon school entry for SY 2018-19.

In the public schools, the School Health Program is taking local improvement actions such as

- ◆ Increasing face to face contact with school nurses
- ◆ Visiting the records staff on a regular basis
- ◆ Random audits of school health records during all school visits, to ensure school entry requirements are complying with Florida Statutes 1003.22.



Annual Student Health Expo

Orange Park Medical Center partnered with the Florida Department of Health in Clay County - School Health Team to coordinate a student health fair at Fleming Island High School, where approximately 2,100 students attended. School Health educated the students on how to provide Hands Only CPR. The students practiced on manikins with feedback devices to facilitate learning. The School Health nurses emphasized the need to call 911 and press hard and fast in the center of the chest at a rate of 100 – 120 beats per minutes.



Disease Prevention & Control

The Disease Prevention & Control program provides the following epidemiology services:

- ◆ **Investigates cluster of illnesses** and notifiable diseases and conditions, including monitoring multiple case-based and syndromic surveillance systems.
- ◆ **Provides consultations** to health care providers and the community to prevent and eliminate the spread of communicable diseases.
- ◆ **Monitor the community's health** and report cases and report emerging health trends and disease conditions to the state health office. We use real time electronic surveillance and monitoring systems to rapidly respond and notify the public of potential or emerging health threats.



Department Highlights

229

Attendees for various division sponsored outreaches.

30 hours

Disseminating information to public.

Epidemiology

DOH-Clay is responsible for the investigation, monitoring, and control of reportable diseases and conditions in Clay County.

Some of the more common reportable disease for Clay County include:

- ◆ Hepatitis C, Chronic
- ◆ Salmonellosis
- ◆ Campylobacteriosis
- ◆ Chlamydia

“upon”
epidemiology
“study”
“people”

1840 551
of services # of cases



Rabies Surveillance Program

DOH-Clay works in cooperation with Clay County Animal Care and Control to evaluate cases of animal bites for the purpose of ruling out rabies concern to the individual and community.

499

of cases

841

of services



Sexually Transmitted Disease (STD) Program

1169

of cases

DOH-Clay provides testing and/or treatment services to persons infected with or suspected of being infected with an STD, to reduce the incidence of STD infections and prevent the development of disease related complications through early identification and treatment.

Ryan White

DOH-Clay Ryan White provides a comprehensive system of care designed specifically for people living with HIV. This includes primary medical care and essential support services for people who are uninsured, or underinsured.

1416

of services

97

of clients

Tuberculosis (TB) Program

DOH-Clay provides a coordinated system of care for those persons identified to be at risk of contracting active TB and/or those persons with active TB and their close contacts.

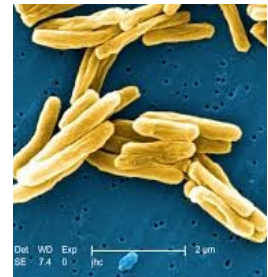
Services include, but are not limited to; risk assessment and screening for TB, diagnosis of TB, and medical management of TB.

7

of cases

864

of services



Clinical Services



The purpose of Clinical services is to provide quality care in the clinical setting within the programs of Family Planning, Immunizations, Laboratory Services, Primary Care, School Health Services including School and Sports Physicals as per Florida Statute, Ryan White services, Tuberculosis Screening and Sexually Transmitted Disease Testing and Treatment. Direct services are provided by physicians, an advanced practice nurse and registered nurses.

Eligibility Services

- ◆ Available every day – the client obtains the necessary application and may complete it at home or in the clinic.
- ◆ Upon returning the completed application and supporting documents the staff will notify the applicant within 3 days if they are eligible for clinical services on a sliding scale.
- ◆ Applications for Presumptive Eligibility for Pregnant Women (PEPW) and Family Planning Waivers are also offered at the clinic – which assists pregnant women in linking with medical services before and after their pregnancy.

# Clients	# Visits	# Services
5,141	8,828	35,225

Service	# Clients
Eligibility	1,054

Family Planning

- ◆ Provided for men and women.
- ◆ **Services include:** non-directive family planning education and counseling, establishing a reproductive life plan, emergency contraception, contraceptive management, pregnancy testing and screening and treatment of sexually transmitted diseases.
- ◆ Limited financial support is available for men and women seeking sterilization services. The goal of Family planning is to promote sexual health and positive birth outcomes by educating individuals to make healthy choices about their own reproductive health as well as the number and spacing of the children in their family.

Service	# Clients	# Visits	# Services
Family Planning	654	1,303	29,277

Services	Total # Provided
Condom Education	912
Depo Provera	192
Implant-Nexplanon insertion/ removal	97
Implant insertion	73
IUD Insertion	65
IUD removal/insertion	35
Sterilization	7

Immunizations

- ◆ Those required for school entry and those recommended by the CDC are provided through the **Vaccine for Children Program** (VFC) for children birth to 19 years of age.
- ◆ For financially eligible uninsured or under insured adults Program 17 provides no cost vaccines.
- ◆ Limited adult vaccines are available at our cost for insured individuals and adults not eligible for Program 17.
- ◆ Adult vaccines require advanced payment.
- ◆ Flu vaccines are available exclusively for established clients until January when the flu vaccine is available to the public at our cost.

Service	# Clients	# Visits	# Services
Immunizations	3,028	3,477	1,121

Service	Total #
680s	2,051
680s Temporary	436
680s Adult/college	38
681s religious exemption	247



Laboratory Services

- ◆ Provided for established clients and payment is required at the time the service is rendered.
- ◆ Services are available at a reduced cost through contracted prices with specified labs.
- ◆ Lab services that are available:
 1. HIV screening for all clients unless the client requests to not be tested (no cost service).
 2. Various point-of-care tests are available for client and provider convenience within minutes.
 3. Early screening for colon cancer is offered to every client 50 and older and other at-risk clients.

Service	# Services
Laboratory Services	5,292
Labs in House	3,006
Colposcopy only	7
Colposcopy w/ Biopsy/ECC	18
Colposcopy & Endometrial Bx	1
Cryocautery	2



Primary Care

- ◆ Provides services to uninsured clients to assist them to improve their current health status and prevent additional health care problems.

Service	# Clients	# Visits	# Services
Primary Care	915	2,750	7,209

- ◆ May be available on a sliding fee scale which is determined through the eligibility process.

- ◆ Limited gynecological services are available through a referral process for clients who have established care through the clinic.

Service	Total #
State Insulin	89
EKG	7
School/Sports/Initial Physicals Ages 1-17	291

- ◆ Includes the **Florida Breast and Cervical Cancer Early Detection** program

available for uninsured women ages 50 to 64 (physical exam, PAP, and a screening mammogram referral).

- ◆ Clients receive instruction on **Prescription Assistance Program** application and helps client obtain prescribed medications at a reduced cost or at no cost for up to a three month supply of medications delivered directly to the client home or the clinic for client pick-up.
- ◆ A **state insulin safety net program** is available: basic insulins are provided at no cost for eligible clients. Arrangements can be made for the insulin to be delivered directly to the client's home.

Sexually Transmitted Diseases

- ◆ Screening and treatment are available by appointment or as walk-in services.
- ◆ Payment for these services is requested at the time of the visit, but clients may be billed if they are unable to pay at the time the service is provided.
- ◆ Individuals who are contacts to a person with a known sexually transmitted disease may be screened and treated at no cost.

- ◆ All individuals seen for STD services are informed of the availability HIV post exposure prophylaxis and post exposure prophylaxis at no cost.

Service	# Clients	# Visits	# Services
STD Testing/ Treatment	779	1,218	7,041
HPV Treatment	23	-	23

- ◆ Individuals who test positive for HIV are invited to start treatment immediately through our no cost Test and Treat program.
- ◆ Condoms are available as a no cost self-service item.

Teen Clinic

- ◆ Teens are welcome to seek care with or without a parent or legal guardian.
- ◆ **Federal law** allows teens to confidentially seek sexual health care.
- ◆ A medical provider documents that failure to seek care could be detrimental to the teen's health.
- ◆ Teens are invited to schedule a confidential appointment or to attend our walk-in teen clinic on Wednesday afternoons.

- ◆ Teen clinic clients see a Nurse Practitioner with a special interest in teen health and our teen health educator.

Service	# Clients	# Visits	# Services
Teen Clinic	77	95	2,841

- ◆ A counselor with specializing in teen suicide prevention is also available as part of our Teen Clinic services.



TB Screening

- ◆ Walk-in service for TB skin testing or blood testing to screen for TB is available to the public when screening is required for employment or school attendance.
- ◆ The fee for skin testing is \$15.00. & the blood test is approximately \$50.00.
- ◆ Clients with positive results are referred to our TB program for follow-up and possible treatment.

School Health

- ◆ School and sports physical are scheduled Monday through Friday by appointment.
- ◆ Base fee for a school or a sports physical is \$25.00.
- ◆ Lab fees are required for additional cost and as requested by the examining provider.
- ◆ The sliding scale does not apply for school or sports physicals and lab fees.



Community Health

Community Health promotes sustainable community action to improve health and achieve health equity. This division strives to maximize public health impact through community health assessments and community health improvement plan action steps, advance health equity by collaborating with community partners to remove barriers to improve health and social determinants of health, and lastly, use evidence based programs to reach goals for making health easier.



Programs within this division include:

Community Health Initiatives, Women, Infants and Children (WIC), Healthy Start, Emergency Preparedness.

Throughout the year, Healthy Start, WIC and Community Health Initiatives collaborate to provide education services to the community at various outreach opportunities in the county.

These outreaches included:

- ◆ Town of Orange Park Farmers Market
- ◆ Town of Orange Park Reel Fun Movie Night
- ◆ Health Fair at Fleming Island High School
- ◆ St. Johns River State College Fall Frolic & Spring Fling
- ◆ St. Vincent's Clay Family Birth Center Healthy Start and WIC Baby Shower
- ◆ Clay County Agricultural Fair
- ◆ Kids Fest at Town of Orange Park
- ◆ Cliff Avril Family Fun Day
- ◆ Global Big Latch On



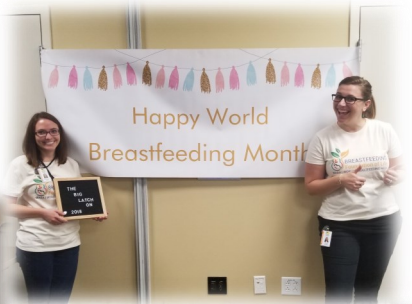
Public Health
Prevent. Promote. Protect.

**Community Health Division
completed 70 community
outreaches, trainings & services.**

Community Health Initiatives

Community outreaches targeted the following initiatives:

- ◆ Sexual Health
- ◆ Family Planning
- ◆ Hypertension
- ◆ Sun Safety
- ◆ Nutrition
- ◆ Immunizations
- ◆ Breastfeeding
- ◆ Safe Sleep
- ◆ Sexually Transmitted Diseases
- ◆ Mosquito Bite Protection
- ◆ Health Education at PACE Center for Girls



Community Health Education:

Reaching the community as a whole to ensure health equity is an important part of community health. We offered services to areas that normally do not have access. We want to reach the next generation with comprehensive health education. We partnered with churches, schools and events to reach community members.





Healthiest Weight

The Florida Department of **Health's Healthiest Weight Initiatives** has become the conduit to improve healthy lifestyles and behaviors of Clay County residents through physical activity and nutrition awareness. Healthiest Weight Florida partners with businesses, schools, non-governmental organizations, non-profit agencies, volunteer coalitions, hospitals, other state agencies and local government.

Five priority strategies include:

1. Increase opportunities for physical activity
2. Make healthy food available everywhere
3. Promote health in the worksite
4. Strengthen schools as the heart of health
5. Market what matters for a healthy life



2017--2018 Healthiest Weight Florida Work Plan for Clay County:

1. **Birth Facilities:** Promoted importance of breastfeeding through a community baby shower.
2. **Early Care & Education:** Made training available to one.
3. **Schools:** Completed One every Kid Healthy Week at Middleburg Elementary.
4. **Communities:** Planted a community garden with al local church.

Every Kid Healthy Week

An annual observance created to celebrate school health and wellness. DOH Clay collaborated with Middleburg Elementary (MBE) to coordinate student activities during their Field/Health Fair. The kids at MBE played golf, were taught how to defend themselves using martial arts, learned about the dangers of tobacco, received bike safety education along with a free bike helmet, and learned how to save a life using Hands Only CPR (Cardiopulmonary Resuscitation).



Community Garden

In partnership with the IFAS/University for Florida Extension office, Community Health assisted with planning and implementing a community garden with Mount Pleasant Missionary Baptist Church in Green Cove Springs. This was to encourage health equity and decrease food deserts in the community.



Global Big Latch on Event

Community Health, WIC and Healthy Start partnered with St. Vincent's Healthcare to host the Global Big Latch On event to promote breastfeeding and peer support among other breastfeeding women. A total of 11 women came with their children and breastfed at the same time as other women around the world. More than 20,000 women worldwide breastfed at the same time.





HEALTHY START

Healthy Start's Care coordinators provide case management that is tailored to the individual needs of each participant with emphasis on initiatives that promote safe sleep, parenting education, breastfeeding and smoking cessation.

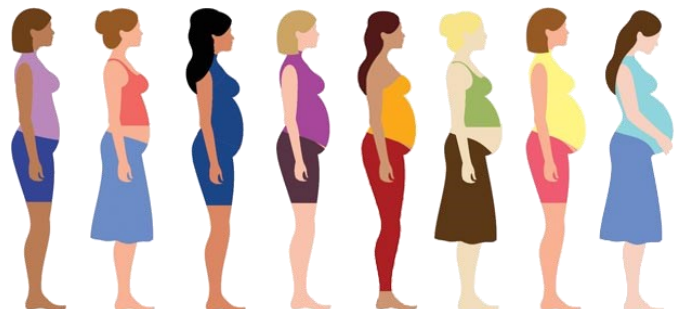
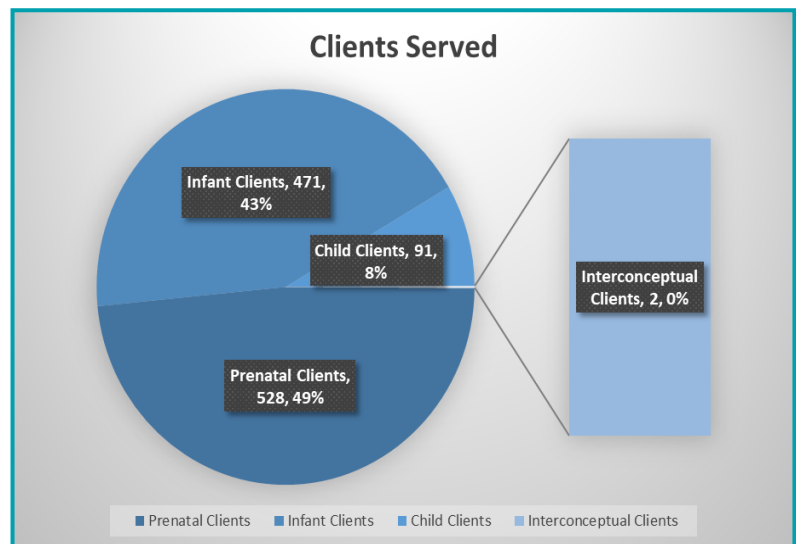
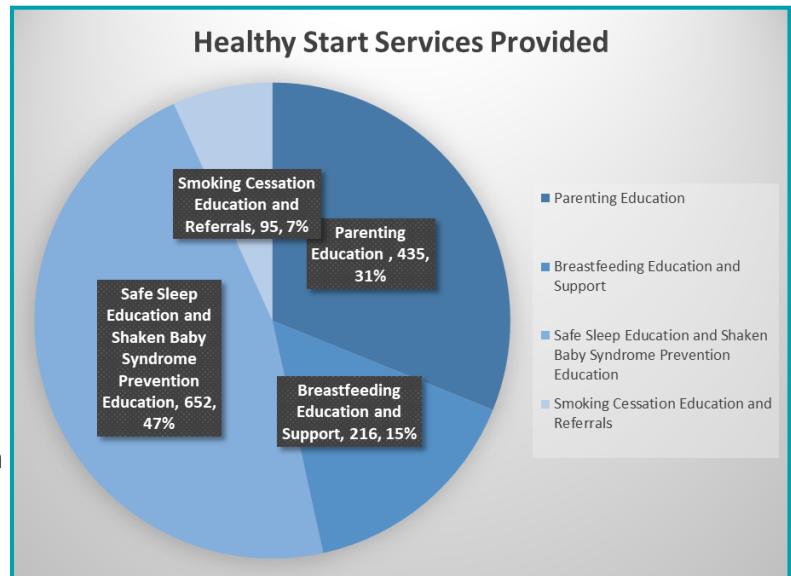
In addition to parenting, safe sleep education, breastfeeding and smoking cessation support, clients are eligible for in-home services that include education on

- ◆ pregnancy
- ◆ childbirth
- ◆ nutritional counseling
- ◆ assessment and tracking of physical development for all infants.

Healthy Start staff also complete one Edinburgh Post-Partum Depression Scale depression screen during pregnancy and two post-partum depression screens to identify clients that are at risk of post-partum depression. Healthy Start staff are trained to provide the Mothers and Babies Cognitive Behavioral Therapy curriculum, and connect clients to resources available in the community.

The Healthy Start Program seeks to

- ◆ reduce infant mortality,
- ◆ promote a healthy full-term pregnancy,
- ◆ improve health and developmental outcomes for all pregnant women and infants.



Highlights:

Continued to work with the Florida Department of Children and Families, Clay Behavioral Health Center, Emergency Pregnancy Services, Episcopal Children's Services/Head Start, Kids First of Florida, Orange Park Medical Center Women's Services, River Region Human Services, Safe Kids of NEFL, St. Vincent's Clay Family Birth Center, WIC, and the Clay County Sheriff's Office Jail Programs Coordinator to address gaps in services for clients in Clay County.



Facilitated the **Clay County Substance Exposed Newborn Taskforce Workgroup** which meets monthly, and attended monthly Infant Mortality Task Force Meetings and quarterly Clay County Early Childhood Interagency meetings.

Celebrated employee: Social Services Counselor **Aleah Caldwell** as FDOH - Clay Employee of the Month.



Women, Infants and Children (WIC)



The Special Supplemental Nutrition Program for Women, Infants, and Children (WIC) is a federally funded nutrition program for women, infants, and children. WIC provides healthy foods, nutrition education and counseling, breastfeeding support, and referrals for health care and community services at no cost. The Clay County WIC program has locations in Green Cove Springs, Orange Park, Keystone Heights. WIC served an average of 3,000 clients/month last year.

Breastfeeding Peer Counselor Program

Recipient of the Breastfeeding Peer Counselor grant which allows us to provide more direct support to new mothers that need assistance for successful breastfeeding. Staff includes a Breastfeeding Coordinator that is an International Board Certified Lactation Consultant and two breastfeeding peer counselors.



Service	Number of Services
Certifications	4,690
Eligibility Determination	5,164
Medical Data Collection	7,400
Benefits Issued	17,410
Nutrition Education Newsletter	14,888
High Risk Nutrition Education	3,130
Low Risk Nutrition Education	6,463
Breastfeeding Individual Counseling	2,648
Breastfeeding Class Attendees	175
Total	61,968

Approximately, \$2 million was redeemed from 2017-2018 from WIC benefits in Clay County.



Accomplishments

- ◆ July 2017, Two of the WIC Nutrition Educators passed their registration exam and obtained their Registered Dietitian (RD) Credentials
- ◆ November 2017, two of the RDs were certified as Medical Interpreter- Spanish
- ◆ January 2018, the Hollie Jenkins, Breastfeeding Coordinator was re-elected as President and Claudette Robinson, Nutrition Educator was elected as Secretary for the NEFL Lactation Coalition
- ◆ WIC & Healthy Start partnered up with St. Vincent's Healthcare to organize the Breastfeeding Baby Shower, where mothers were able to receive education and gifts.



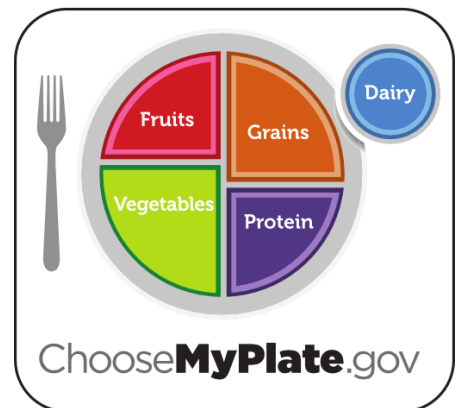
WIC Outreaches

Clay County WIC participated in a number of trainings and outreach opportunities this past year.

- ◆ *Breastfeeding Baby Shower*
- ◆ *Touch a Truck*
- ◆ *Cliff Avril Family Fun Day*
- ◆ *Head Start Annual Health Fair*
- ◆ *Pink Goes Red at Orange Park Mall*
- ◆ *Emergency Pregnancy Services of Orange Park*
- ◆ *Episcopal Children's Services Health Fair*



Hollie Jenkins, Breastfeeding Coordinator hosted the first SERO Regional Breastfeeding Training for surrounding counties to learn more about "The Loving Support", a peer counseling grant.



Emergency Preparedness

Hurricane Irma Incident Action Plan (IAP) 2017

During the month of September, our community was highly affected in last year's Hurricane season. The staff from the Health Department responded timely to the landfall of Hurricane Irma by establishing our Special Needs Shelter at Lake Asbury Middle School. Due to the severity and unpredictable path of the Hurricane, Clay County was required to open an additional Special Needs Shelter located at Thrasher Horne Center in anticipation of an influx of clients from across the state.



Hurricane Season 2016-2017 Comparison	2016 Hermine and Matthew	2017 IRMA
# of hours SpNS open Lake Asbury Middle School	78	108
# of hours SpNS open at Thrasher Horne Center	n/a	102.5
# of SpNS persons sheltered at LAMS	65 clients	139 clients
# of SpNS persons sheltered at THC	n/a	52 clients
Total # of personnel at the SpNS	135	234
# of hours ESF8 staffed at EOC	72	240

Special Project Funding

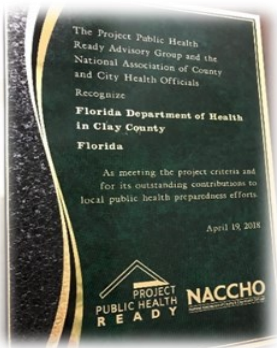
The FDOH in Clay County was a recipient of a grant provided by the Northeast Florida Healthcare Coalition (NEFLHCC). Items were able to be purchased to better serve our special needs residents.



- ◆ Oxygen Concentrators
- ◆ Special Needs Patient Cods
- ◆ Oxygen tank carts and stands
- ◆ Wheelchairs to assist with transportation within the shelter

Recognition

Florida Department of Health in Clay County recognized at the Annual Preparedness Summit 2018 by the following for meeting project criteria for outstanding contributions to public health preparedness efforts.



Stop The Bleed Efforts

In conjunction with a multiple county and municipal agencies during the 2018 Clay County School Active Assailant Table Top Exercise, Florida Department of Health (FDOH) in Clay County reiterated the importance of the program. Here are some of the milestones for the Stop the Bleed Initiative in Clay County:

- ◆ Train the Trainer courses hosted by UF Health and Orange Park Medical
- ◆ Individual Training for the Clay County School District Supervisors
- ◆ FDOH in Clay County distributed 258 Stop the Bleed Kits to all 46-individual public schools in Clay County



Project Public Health Ready Program

- ◆ Assists with becoming fully integrated into the response community and be prepared to respond to an emergency
- ◆ Builds partnerships with state and federal leads, community response partners and stakeholders
- ◆ Facilitates collaboration and team-building across our health department
- ◆ Provides a written all-hazards response plan specific for our department meeting national & federal standards



Environmental Health

Partnering/Outreach

Clay EH continues our partnering with the Clay County Sheriff's Office in the ongoing quest to keep sharps out of the waste stream. This protects not only our county employees, but also keeps these items out of the environment.

EH staff routinely meet with County Building and Zoning departments and Private partners to review proposed development projects, reviewing plans, and providing regulatory information to applicants.

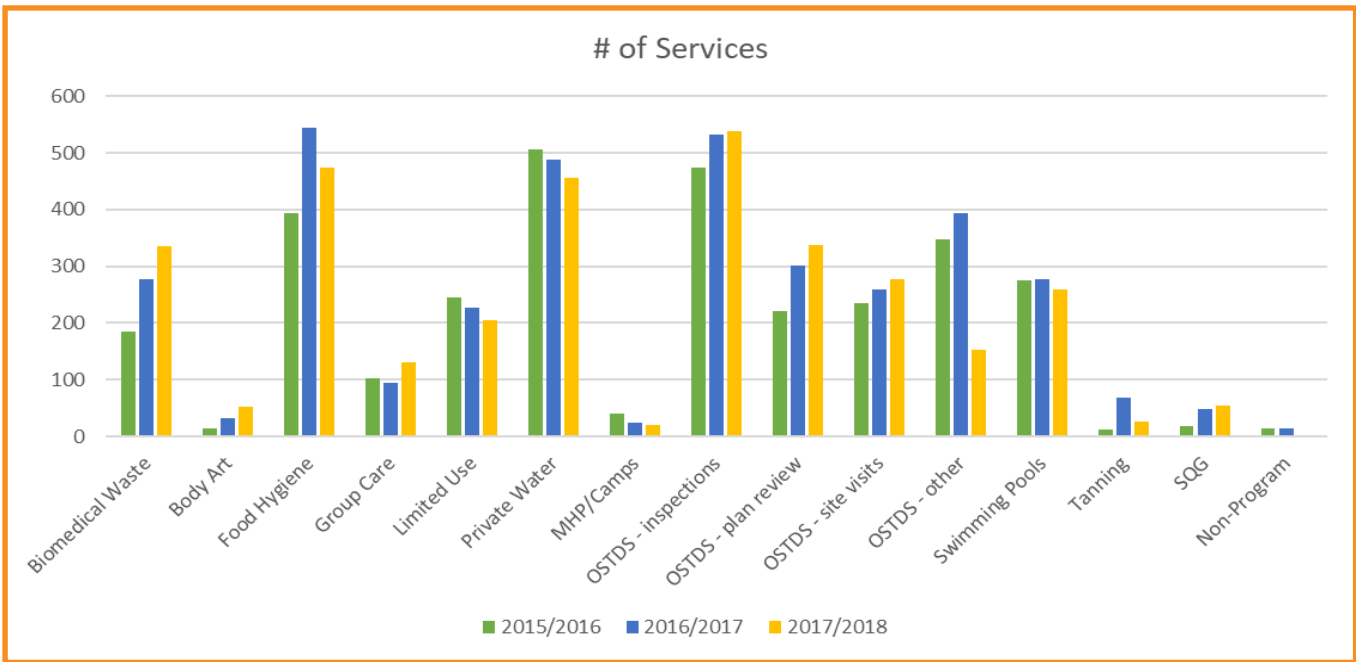
EH staff is coordinating with Clay County Schools in preparation of the new Food Rules coming out in Fall 2018. A meeting was held post training, to discuss and share documents.



Community Participation

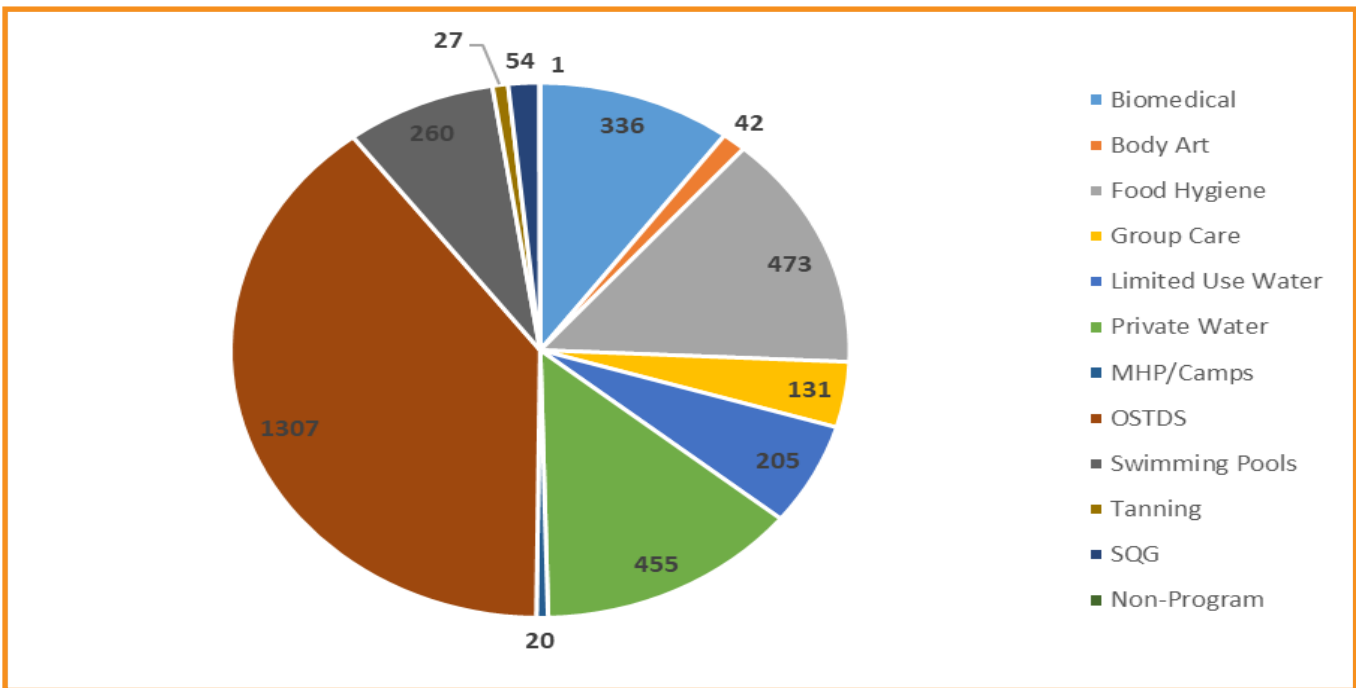
EH staff participate in Science Fair judging at Ridgeview High on January 9, 2018.

PROGRAM AREA	NUMBER OF SERVICES
Biomedical Waste	336
Body Art (Tattoo/Piercing)	42
Food Hygiene	473
Group Care	131
Limited Use Water	205
Private Water	455
Mobile Home Parks/Camps	20
OSTDS – inspections	539
OSTDS – plan reviews	337
OSTDS – site visits	278
OSTDS - other	153
Swimming Pools	260
Tanning	27
Small Quantity Generators (Hazardous Waste)	54
Non-Program complaints	1
TOTAL	3312



ENVIRONMENT HEALTH & SAFETY

**A
CLEAN PLACE
IS A
SAFE PLACE.**



Community Health Improvement Plan

The Community Health Improvement Plan (CHIP) is a vital and continuous way that supports how the community will address priority health issues identified from the Community Health Assessment. The CHIP is devoted to focusing on improving health equity and decreasing health disparities in the community. By having a comprehensive view of our community's health, we can formulate initiatives that considers the social determinants of health, higher health risks, and more frequent poorer health outcomes. From 2015-2018, the three priority areas have included: Mental Health, Access to Healthcare, and Healthy Behavior & Prevention.

With constant collaboration and efforts with our community partners, all strategies, objectives, and measures are reported during quarterly meetings and modified, respectively. We ensure all mentioned are attainable and remain relevant. The CHIP is a successful county-wide document, which does not solely belong to the "Health Department". The progress that has been made in each area is provided below - The overall completion is 47%.

More benefits to completing a CHIP:

- ◆ Increased knowledge about public health and interconnectedness of resources
- ◆ Identifies strengths and weaknesses to address in quality improvement projects
- ◆ Helps ensure alignment with DOH -Clay County's strategic plan, quality improvement plan, workforce development plan, and PHAB Accreditation requirements

Priority Areas	Strategies	% of completion
Mental Health	7/15	47%
Access to Healthcare	4/16	25%
Healthy Behaviors & Prevention	13/20	65%



Locations & Contacts

Location	Address	Telephone
Administration	1305 Idlewild Avenue Green Cove Springs, FL 32043	904-529-2800
Bear Run Clinic	3229 Bear Run Blvd. Orange Park, FL 32065	904-529-2800
Healthy Start	301 S. West Street Green Cove Springs, FL 32043	904-529-2800
WIC Program <i>Green Cove Springs</i>	301 S. West Bldg. B Green Cove Springs, FL 32043	904-272-3177
WIC Program <i>Orange Park—Bear Run</i>	3229 Bear Run Blvd. Bldg. B Orange Park, FL 32065	904-272-3177
WIC Program <i>Keystone Heights</i>	160 SW Nightingale Street Keystone Heights, FL	904-272-3177
Environmental Health	477 Houston Street Green Cove Springs, FL 32043	904-278-3784



Florida Department of Health in Clay County
1305 Idlewild Avenue
Green Cove Springs, FL 32043
(904)529-2800