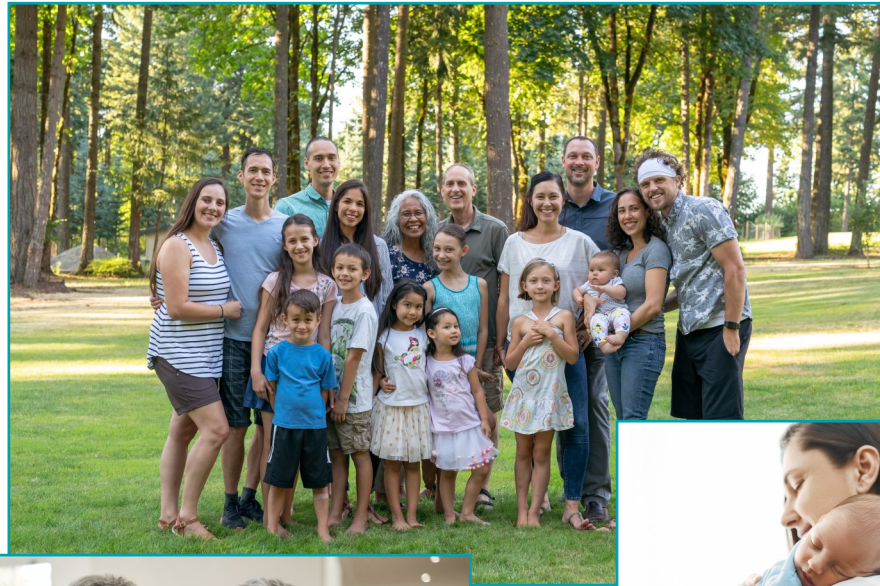
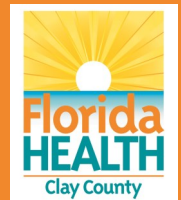


# DEPARTMENT OF HEALTH IN CLAY COUNTY

## ANNUAL REPORT 2022-2023



1845 Town Center Blvd., Building 400, Fleming Island, FL  
904-529-2800  
Clay.FloridaHealth.gov



# TABLE OF CONTENTS

## MISSION

To protect, promote and improve the health of all people in Florida through integrated state, county and community efforts.

## VISION

To be the Healthiest State in the Nation.

## ICARE VALUES

- Innovation
- Collaboration
- Accountability
- Responsiveness
- Excellence

Health Officer Message .....	1
Administrative Services	
Fiscal and Budget.....	2
Information Technology .....	3
Vital Statistics .....	3
Environmental Health Services.....	4
Clinical Services	
School Health Services Program .....	5
Disease Prevention and Control .....	6-7
Bear Run Clinic.....	8-9
Overdose Data 2 Action (OD2A) and Community Paramedicine.....	10
Community Health Services	
Women, Infants and Children (WIC) .....	11-12
Community Outreach and Achievements.....	13-14
Emergency Preparedness .....	15
Community Health Strategies	
Strategic Plan .....	16

The Florida Department of Health in Clay County is a state agency in partnership with county government. This Annual Report summarizes accomplishments and activities of DOH-Clay for the period of July 1, 2022 - June 30, 2023.

\* If any information or data does not fall within this fiscal year range, the varied timeframe will be indicated in a footnote.

# HEALTH OFFICER MESSAGE



Heather Huffman, MS, RDN, LD/N, IBLC

Dear Clay County Community Partners,

As we close another year and look forward to what lies ahead, I am pleased to present the Florida Department of Health in Clay County's annual report, a testament to our unyielding dedication to the health and well-being of our community.

First, I want to express my profound appreciation for our devoted staff, community partners and stakeholders. Without your unwavering support and commitment, we would not have achieved the progress outlined in this report.

One of our significant undertakings this year was the careful review of data from our Community Health Assessment (CHA). This quantitative and qualitative approach has provided clarity on the health status of our community, pinpointing areas where our efforts can be most impactful. The CHA findings have become an invaluable tool, steering our policies, programs, and priorities.

This year also marked notable progress in advancing our four strategic priority goals:

*Population Health:* We have expanded initiatives to address key health determinants, resulting in improved outcomes for various population segments.

*Community Awareness:* Through outreach, education, and communication, we've seen an increase in community engagement and awareness on critical health issues.

*Internal Awareness:* Strengthening internal communication has ensured our teams remain aligned, informed, and prepared to respond to the community's needs.

*Workforce Development:* By investing in training, skill development, and resources, we've enriched our workforce's capabilities, ensuring they are equipped to deliver exceptional public health services.

As we gear up for the coming year, a central part of our agenda will be the implementation and enhancement of our Community Health Improvement Plan (CHIP). Created from insights from the CHA, the CHIP outlines strategic actions aimed at addressing health disparities, disease prevention and lifestyle behaviors, behavioral health, and elevating the overall health standards of our community.

While we pause to recognize our accomplishments, we remain attentive to the dynamic health landscape. Our commitment to community engagement and strong partnerships remains unshaken, as we navigate the complex terrains of emerging and existing health challenges.

In conclusion, my heartfelt thanks go out to the public for their trust, collaboration, and participation in our health programs. Your dedication to public health practices significantly enhances our efforts.

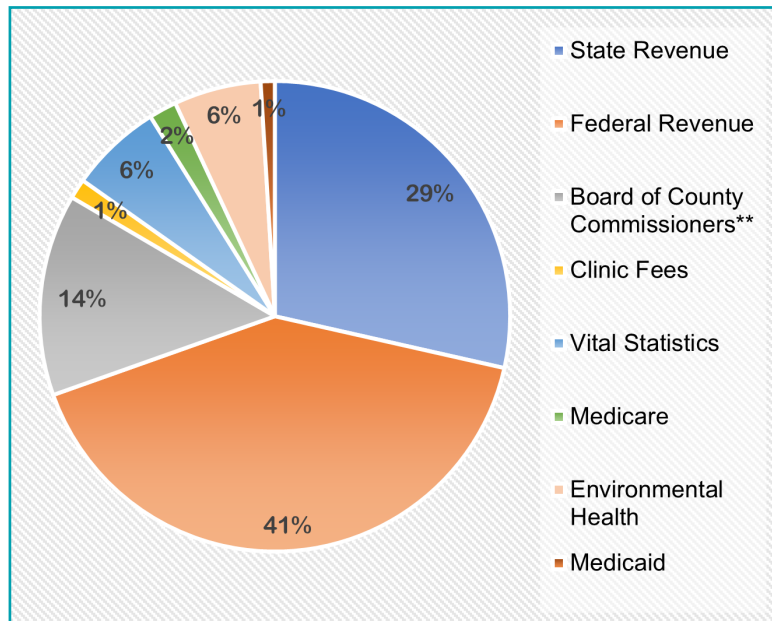
# ADMINISTRATIVE SERVICES

## FISCAL AND BUDGET

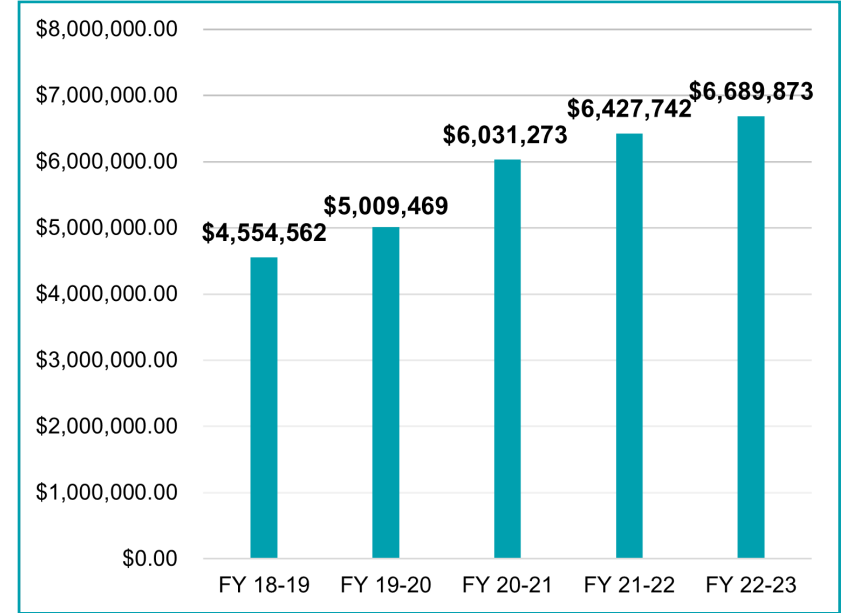
DOH-Clay is a state agency that relies on federal, state and local county government funding to help support its public health programs and services. Additional revenue is received through contracts and grants, state and county fees and payments from Medicaid programs.

**\*\*BCC budget based on County fiscal year Oct. 1– Sept. 30**

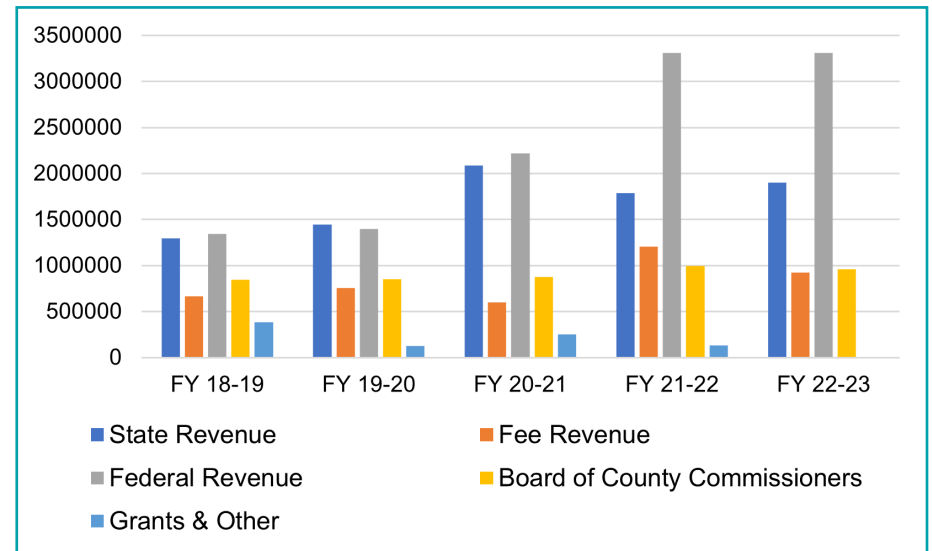
**Financial Resources**



**Total Resources**



**Resources by Category**



# ADMINISTRATIVE SERVICES

## INFORMATION TECHNOLOGY

The Information Technology (IT) Department provides technical support for DOH-Clay and MQA Investigative Services Unit (Jacksonville) locations. The IT Department also assists DOH-Nassau as needed. Support includes server, desktop, network, data backup, phone system and commonly used software. The department is also tasked with ensuring compliance with data security standards and updating the internet and intranet websites.

2022-23 Highlights		
Completion of 1,307 helpdesk tickets.	IT plans were completed for DOH-Clay's move to its new and permanent location.	Purchase and installation of new computer hardware per department refresh policy.

## VITAL STATISTICS

DOH-Clay provides birth and death certificates. Collaboration with VitalCheck.com has been established to accept credit card orders for birth and death certificates and offers overnight delivery.

Applications	Number of Services	Fees Collected
Birth Certificates	2,962	\$261,335
Death Certificates	5,513	
Birth Certificates via Tax Collector's Office	711	\$14,481

# ENVIRONMENTAL HEALTH SERVICES

The Environmental Health Program is the regulatory branch of DOH-Clay. The goal is to protect the health of the citizens through education and enforcement of public health laws. Environmental Health continuously works with owners/operators to achieve compliance with all Statutory Laws and Administrative Rules.



Environmental Health  
 County Administration Building  
 477 Houston St., 3rd Floor  
 Green Cove Springs, FL  
 (904) 278-3784

Program Area	Number of Services*
Biomedical Waste	379
Body Piercing	13
Tattoo	65
Environmental Health Initiatives	136
Food	370
Lead Investigations	2
Group Care	92
Limited Use Water	224
Safe Drinking Water Systems (Non-DOH)	4
Migrant Labor Camps	8
Mobile Home Parks/Camps	27
Septic Inspections (OSTDS)	809
OSTDS Operating Permit Inspections	68
OSTDS Plan Review	602
OSTDS Service Permit Inspections	3
OSTDS Permits Issued	590
OSTDS Site Evaluations	365
OSTDS Abandonment Inspection	3
OSTDS Complaint Investigations	42
Swimming Pools	553
Tanning	14
Private Wells	840
Small Quantity Generator	45
<b>Total</b>	<b>5,254</b>

\*Services include inspections, re-inspections, site evaluations, incomplete site visits, investigations, plan reviews, sample collection and enforcement actions.

# CLINICAL SERVICES

## SCHOOL HEALTH SERVICES PROGRAM

The Clay County School Health Services Program is a collaborative partnership between DOH-Clay and Clay County District Schools (CCDS). DOH-Clay is responsible for the administrative oversight of the program as per Florida Statutes (F.S.) 381.0056.

The goal of the School Health Services Program is to ensure that students are healthy, in school and ready to learn. Services are provided in accordance with the local School Health Services Plan, which is jointly developed by DOH-Clay, CCDS and the School Health Wellness Advisory Council (SHWAC).

The School Health Services Program provides basic school health services to all the students in the 43 public schools in Clay County. DOH-Clay also partners with the 22 private schools, ensuring school health immunization requirements for F.S. 1003.22 are being met, as well as assisting with mandatory mass health screenings, as requested.

<i>Services Provided in School Health Rooms</i>	<i>Number of Services</i>
Registered Nurse Assessment	124,017
Licensed Practical Nurse Encounter	39,681
Paraprofessional Encounter	51,156
Consultations	67,553
Individualized Health Care Plans Developed	1,688
Complex Medical Procedures Performed	34,077
First Aid Administration	84,866
Medication Administration	65,938
ESE Staffing/Screening	1,946
Immunization Follow-up Services	1,319
Student Health Record Reviews	8,342
Child Specific Training Classes	1,008
<b>Total</b>	<b>481,591</b>

### Health Screenings

Vision, hearing, scoliosis and growth and development screenings are conducted in accordance with (F.S) 381.0056. Vision and hearing impairment directly interfere with the learning process and are often detected during school screenings. A plan for follow-up is an essential component of the screening program and is provided in conjunction with the 2022-23 Scope of Work.

<i>Clay County Students</i>	<i>Vision KG, 1st, 3rd, 6th Grades</i>	<i>Hearing KG, 1st, 6th Grades</i>	<i>Scoliosis 6th Grade</i>	<i>Growth and Development 1st, 3rd, 6th Grades</i>
<b>Students Screened</b>	9,417	7,081	2,286	6,992
<b>Percentage of Students Screened</b>	98.12%	98.24%	95.53%	97.15%

# CLINICAL SERVICES

## DISEASE PREVENTION AND CONTROL

**\*\*All data is from Jan. 1, 2022 to Dec. 31, 2022 and is preliminary and subject to change**

Selected Reportable Disease Counts	
Selected Reported Diseases	Counts**
Campylobacteriosis	29
Candida Auris Infection	33
COVID	26,086
Creutzfeldt-Jakob Disease	1
Cryptosporidiosis	4
Cyclosporiasis	1
Giardiasis	11
Hepatitis B, acute	6
Hepatitis B, chronic	31
Hepatitis C, acute	17
Hepatitis C, chronic	127
Lead poisoning	25
Legionellosis	7
Lyme Disease	3
Malaria	1
Mpox	10
Animal Bites (Possible Rabies Exposures)	341
Salmonella Typhi	1
Salmonellosis	59
Shiga Toxin-producing Escherichia Coli	9
Shigellosis	7

### Tuberculosis (TB) Control Program

DOH-Clay provides a coordinated system of care for those persons identified to be at risk of contracting active TB and/or those persons with active TB and their close contacts. Services include, but are not limited to, risk assessment, screening, diagnosing and medical management of TB.

In 2022, DOH-Clay partnered with St. Johns and Flagler Counties to implement a new model for delivery of TB services. TB case management is a very specialized field of nursing, which is largely impacted when there is staff turnover. This model has allowed Clay to develop and retain a nurse specialized in TB. This nurse is able to solely work in TB services, thereby continuing the expertise in our county.

Active TB	Cases **
Treated for active disease	6
Treated for latent TB infection	5
Provider outreaches conducted	68



# CLINICAL SERVICES

## DISEASE PREVENTION AND CONTROL

**\*\*All data is from Jan. 1, 2022 to Dec. 31, 2022 and is preliminary and subject to change**

Reported Sexually Transmitted Diseases and HIV	
Disease	Number of Cases**
Chlamydia	804
Gonorrhea	330
Syphilis	82
HIV	17
<b>Total</b>	<b>1,233</b>

### Ryan White Program

The Ryan White Program is a federally-funded program that offers medication, support and care to people who are living with HIV. This program is dedicated to providing the best support for community members to live long, healthy lives.

### Ryan White Program

Number of Clients	118
Newly Enrolled Clients	35
Services	2,644

### ADAP Program

Percent of ADAP clients with suppressed viral load	98.81%
ADAP initial enrollments	15
ADAP re-enrollments	99
Clients with copay and deductible assistance	41
Clients who are on direct dispense of medication	42

#### DID YOU KNOW?

FDOH now has a portal where clients can complete some of their enrollment forms online.

<https://rwces.floridahealth.gov/>

# CLINICAL SERVICES

## BEAR RUN CLINIC

Staffing for our Clinical Services includes Physicians, Advanced Practice Registered Nurses, Registered Nurses, Licensed Practical Nurse, and clerical staff.

### Services include:

- Family Planning
- Teen Clinic
- Immunizations
- Laboratory Services
- Florida Breast and Cervical Cancer Early Detection Program (ages 50-64)
- Prescription Assistance Program (PAP) and Primary Care
- School and Sports Physicals
- Sexually Transmitted Disease Screening, Testing and Treatment
- HIV Early Intervention Testing and Treatment
- Tuberculosis Screening and Treatment

Total Services	Total Clients	Total Visits
53,252	4,384	6,388

### Primary Care

Services are provided to uninsured clients to improve their current health status and prevent other health issues.

### Services include:

- Treatment of acute and chronic health conditions
- Florida Breast and Cervical Cancer Early Detection Program (ages 50-64), includes physical exam, PAP, screening mammogram referral
- Prescription Assistance Program to assist client in obtaining up to 3 months' supply of medication at reduced rate or no cost to the client.

Total Services	980
Total Clients	173
Total Visits	312
State Insulin	1
Florida Breast and Cervical Early Detection Program	17

### School Entry Exams and Sports Physicals

School Entry Exams and sports physical are available for Pre-K through 12th grade.

School Entry Exams/ Sports Physicals	1,017
---	-------

### Laboratory Services

Laboratory services are available for established clients, at a reduced cost, from specific labs at contracted prices.

### Testing includes (but not limited to):

- HIV testing
- Specific point of care testing
- Early colon screening for clients 50 years and older
- STD testing
- Provider ordered testing and annual labs

Lab Services	In-house Labs
5,249	5,667

### Tuberculosis (TB) Screening

TB testing is available as a walk-in service for school or employment attendance. Clients with positive results are referred to our TB Program for evaluation and follow up.

Total Services TB Gold (blood test) and PPD (skin test)	
TB Gold	400
PPD	71

# CLINICAL SERVICES

## BEAR RUN CLINIC

### Immunizations

Vaccines required for school entry and recommended by the CDC are provided through the Vaccine for Children Program from birth to 19 years of age.

	Bear Run Clinic	Back to School Outreach
Total Services	10,590	2,366
Total Clients	2,491	712
Total Visits	2,938	727
680 School Entry Form	1,546	507
680 Temporary	311	50
680 College or Adult	47	8
681 Religious Exemption	405	74

### Sexually Transmitted Disease/Infection (STD/STI)

Individuals who are contacts to STD/STI may be tested and or treated at no cost. HIV Post Exposure Prophylaxis education given to individuals. Persons who test HIV positive are offered to start immediate treatment through the Test and Treat Program. Condoms are available at no cost as a self-service item.

	Total Clients	Total Visits	Total Services
STD Screening, Testing and Treatment	721	1,130	7,867
HPV treatment-TCA Treatment	9	9	9
HIV Pre Exposure Prophylaxis Prep Education	582	956	956
HIV Testing and Treatment	40	49	49

### Family Planning

The goal is to provide education and information on sexual health, positive pregnancy outcomes and family planning.

#### Services include:

- Non-directive family planning education
- Family Planning Counseling Reproductive life plan
- Emergency contraception
- Pregnancy testing
- Sexually Transmitted Disease screening, testing and treatment

Family Planning	
Total Services	26,433
Total Clients	424
Total Visits	708

### Teen Clinic

Available for clients 18 years of age and under. Per Federal law, confidential services may be provided with or without a parent or legal guardian. Teen services are offered by a nurse practitioner and/or teen health educator.

Teen Clinic	
Total Services	3,289
Total Clients	55
Total Visits	64

Services	Condom Education	Depo Provera	Long-Acting Reversible Contraceptives
Total	1,112	148	55

# OVERDOSE DATA 2 ACTION AND COMMUNITY PARAMEDICINE



DOH-Clay made great strides with the Overdose Data 2 Action (OD2A) Grant. The OD2A Task Force consists of more than 115 community partners who met monthly. Through Academic Detailing, Clay County health care providers were visited to discuss OD2A and ensure best practices were being followed in prescribing and treating patients with opioids. This included providing information on the prescription drug monitoring program (EFORCSE in Florida), checking for dangerous co-prescriptions, identifying patients who may have an opioid use disorder (OUD), safe tapering practices, naloxone co-prescriptions, and non-pharmacologic alternatives to opioids.

In early 2023, the DEA removed the requirement of the X-waiver, which previously required all licensed prescribers to complete a secondary 8-hour course in order to prescribe medication assisted treatment (MAT), especially buprenorphine. It also removed the cap of 30 patients per month for prescribing. Psychiatric providers are now encouraged to consider treating their existing patients for OUD rather than making a referral.

## Community Paramedicine Program

As part of the OD2A Grant, DOH-Clay works alongside Clay County Fire and Rescue (CCFR) on the Community Paramedicine Program. This program involves connecting people with OUD to CCFR for immediate MAT, as well as a Recovery Peer Specialist with Clay Behavioral Health Center for a guiding hand in recovery. Once CCFR takes on a new client, Clay Behavioral Health Center schedules that client an initial appointment with their provider as well as a bio-psycho-social assessment with a licensed mental health counselor in order to properly address the clients' specific needs before referring them to substance abuse treatment. **The program has been very successful with 114 total client intakes in 2022 and 54 intakes in the first half of 2023.**



## Coordinated Opioid Recovery

A NETWORK OF ADDICTION CARE



On Oct. 24, 2022, a press conference was held with the State Surgeon General and community partners to announce Clay County's participation in the Coordinated Opioid Recovery (CORE) program. Clay County is one of only 12 counties in the State of Florida to participate.



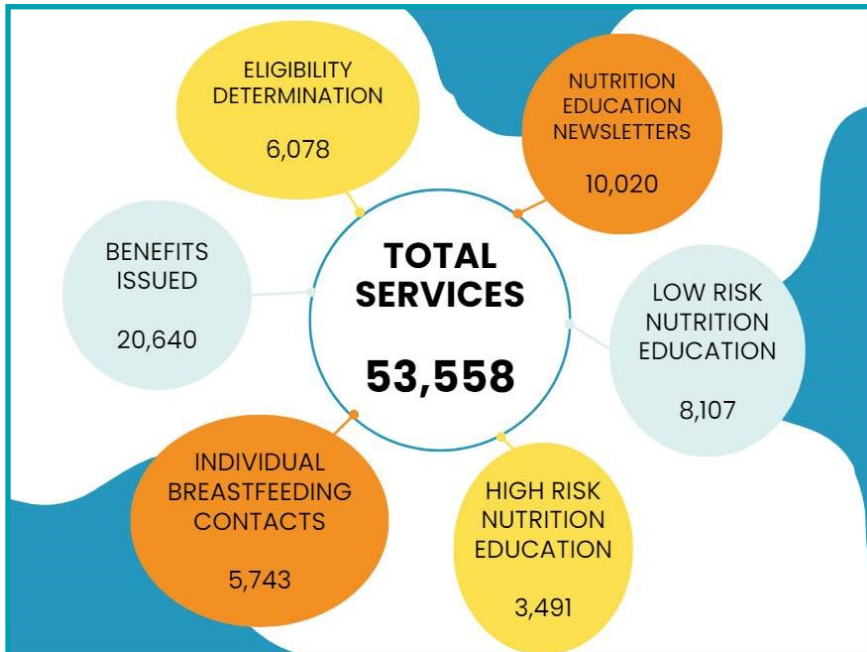
## Community Outreach Events

- Hammer and Hope (Orange Park, FL)
- Recovery Month Event (Middleburg, FL)
- Overdose Awareness Seminar (Orange Park, FL)
- OD2A Annual Conference (Orlando, FL)
- International Overdose Awareness Day (Orange Park, FL)

# WOMEN, INFANTS AND CHILDREN (WIC) PROGRAM

WIC is a federally-funded nutrition program that provides monthly healthy food packages, nutrition education and counseling, breastfeeding support and referrals for health care and community services at no cost. DOH-Clay's WIC Program has locations in Fleming Island, Orange Park and Keystone Heights.

## Services Provided



## 2022-23 WIC Numbers

**3,889**

Monthly average of women, infants and children served by WIC.

**\$2,908,397**

Yearly total in WIC benefits spent at authorized grocery stores.



**47%**

of women enrolled in WIC services within their first trimester



**84%**

of WIC mothers-initiated breastfeeding



# WOMEN, INFANTS AND CHILDREN (WIC) PROGRAM

## Community Outreach

In August, DOH-Clay WIC hosted its Annual Baby Shower at its new Fleming Island location. More than 70 guests had the opportunity to visit with 7 community partners to learn about available resources for expectant moms.

In March, WIC joined Ascension St. Vincent's Clay in hosting the Big Latch On. More than 40 women came out to participate in a simultaneous latch on.

WIC also participated in local health fairs where members of the WIC staff shared information on WIC enrollment, health care referrals and breastfeeding and nutrition education.



## 2022-23 Breastfeeding Numbers

**41.14%**

Infants at least 26 weeks old breastfed for at least 26 weeks in Clay WIC.  
Increase of 1.84% from 2022.

**43.04%**

Breastfed infant enrollees in Clay WIC  
Increase of 2.18% over the past year



**23.61%**

Infants at least 26 weeks old fully breastfed for at least 26 weeks in Clay WIC.  
Increase of 2.53% from 2022  
Infants at least 26 weeks old breastfed for at least 26 weeks in Clay WIC



### Breastfeeding Warmline

The Breastfeeding Warmline provides dependable breastfeeding information and support to breastfeeding WIC clients. The Warmline is staffed by WIC breastfeeding personnel who have been trained to handle breastfeeding and related issues.



*All calls and messages to the Warmline are responded to within 24 hours, 7 days a week.*

**904-272-3177, ext. 3**

# COMMUNITY OUTREACH AND ACHIEVEMENTS

Community Health Services aligns outreach activities and community health education with DOH-Clay and agency strategic plans and initiatives, focusing on the following:

- Smoking and vaping prevention and cessation*
- Unintentional injuries and death, including suicide prevention*
- STDs and HIV transmission prevention*
- Chronic disease prevention, including heart disease and diabetes*

## Community Education

Diabetes	Mental Health	Stress Management
Family Planning	Nutrition	Immunization
Heart Health	Healthy Aging	STD/HIV Prevention
Healthy Relationships		

*Bi-monthly presentations on healthy aging, diabetes, heart health, high blood pressure and stroke and healthy food and nutrition at the Clay County Public Libraries.*

*Provided confidential education for teens on healthy relationships, consent, STDs/HIV prevention, family planning, support, and vaping and tobacco prevention*

*Presented education and information on health equity, health disparities, health inequities and health inequalities to DOH-Clay and community partners.*

*Provided educational presentations at Mission of the Dirt Road, which included information on diabetes, stress management, high blood pressure and stroke, heart disease and mental health.*

## Community Outreach Events

- |   |   |
|---|---|
| Touch a Truck   | Teen Valentine's Expo                                   |
| International Overdose Awareness Day                  | Hammer & Hope, Orange Park                              |
| O2B Kids Spooktacular                                 | Kids Fest   |
| Project Opioid Overdose Awareness                     | Mission of the Dirt Road                                |
| Back to School Health and Wellness Immunization Drive | Episcopal Children Services—Share the Love Parent Event |
| National Night Out                                    | Minority Month Health Fair                              |
| Healthy Harvest—High Ridge Initiative                 | Community Baby Shower                                   |





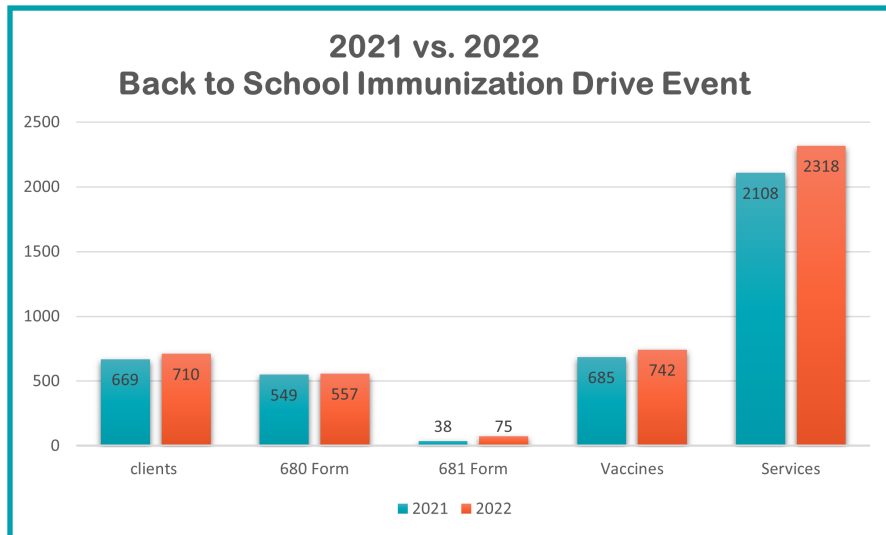


# EMERGENCY PREPAREDNESS

## 2022 Back to School Immunization Drive

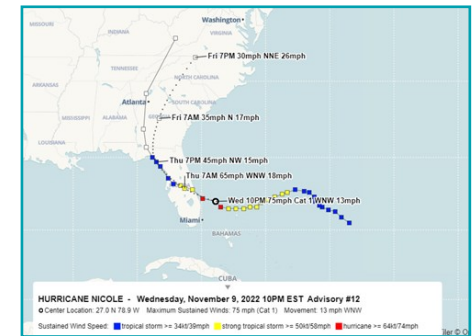
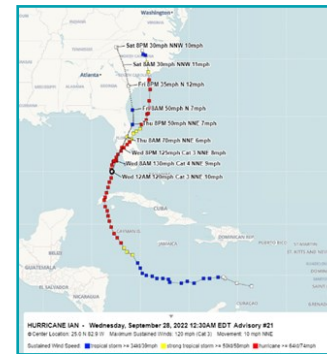
Emergency Preparedness spearheaded the Back to School Immunization Drive for the fourth year in a row. Like previous years, our number of clients seen, services provided and vaccines administered increased. The annual event was held at the Clay County Fair Grounds, which allows for vast parking and easy flow of traffic in and out of the site.

We had an increase of 9% of services provided, 6% increase of clients seen and a 8% increase of vaccines provided to the community.



## Emergency Response

During the recent year, DOH-Clay was ready to assist our community in their times of need. We established the ESF8 desk and the Special Needs shelter twice during the hurricane season. During the responses to Hurricane Ian and Nicole, we were able to refine our procedures with Clay County Emergency Management and Fire Rescue by reestablishing our working relationships and supply caches in case of emergencies, man-made or natural.



Throughout the year, the agency began the process of reapplying for re-recognition for Project Public Health Ready (PPHR). PPHR is a criteria-based training and recognition program that assesses local health department capacity and capability to plan for, respond to, and recover from public health emergencies. PPHR aims to protect the public's health and strengthen the public health infrastructure by equipping local health departments with sustainable tools to plan, train, and exercise using a continuous quality improvement model.



# 2019-23 DOH-CLAY STRATEGIC PLAN

The DOH-Clay Strategic Plan was released in November 2019, and can be found at <http://clay.floridahealth.gov/>.

The plan outlines what DOH-Clay plans to achieve, how it will be accomplished and how progress will be measured. The strategic plan exists to promote public health in all places and show accountability from DOH-Clay to the community and stakeholders.

A special thank you to our dedicated staff and external stakeholders who have devoted time and effort in accomplishing our goals during this process.

Below are the four strategic priorities selected to improve population health and health outcomes of Clay County.

## Priority 1: Population Health

How does Clay County get to sustainable, optimal health for all residents?

### Goal:

Ensure opportunities for health in all places for all residents to live long, healthy lives.

COMPLETE

## Priority 2: Community Awareness

How can we increase community awareness of our purpose and role within the health community?

### Goal:

Ensure opportunities for health in all places for all residents to live long, healthy lives.

COMPLETE

## Priority 3: Internal Awareness

How do we establish effective and consistent internal communications?

### Goal:

Foster a workplace environment that leads to enhanced unity.

COMPLETE

## Priority 4: Workforce Development

How do we recruit, develop, retain, and grow a competent public health staff member that provides accurate and timely services to the community?

### Goal:

Build a competent, productive public health workforce.

COMPLETE

# DOH-CLAY LOCATIONS

## Administration

1845 Town Center Blvd.  
Building 600  
Fleming Island, FL 32003  
904-529-2800

## Environmental Health

*Monday-Friday, 8:00 a.m.-4:30 p.m.*  
477 Houston Street  
Green Cove Springs, FL 32043  
904-278-3784

## Bear Run Clinic

*Monday-Friday, 8:00 a.m.-5:00 p.m.*  
3229 Bear Run Blvd.  
Building A  
Orange Park, FL 32065  
904-529-2800

## Vital Statistics (Birth and Death Certificates)

*Monday-Friday, 8:00 a.m.-5:00 p.m.*  
3229 Bear Run Blvd.  
Building A  
Orange Park, FL 32065  
904-529-2800

## Women, Infants and Children (WIC) Program

904-272-3177

### WIC Fleming Island

*Tuesday-Thursday, 7:00 a.m.-5:00 p.m.*  
1845 Town Center Blvd.  
Building 600  
Fleming Island, FL

### WIC Orange Park

*Monday-Friday, 7:00 a.m.-5:00 p.m.*  
3229 Bear Run Blvd.  
Building B  
Orange Park, FL

### WIC Keystone Heights

*1st Wednesday of each month, by appointment only*  
160 SW Nightingale St.  
Keystone Heights, FL